



Turner Field Stadium
Neighborhoods
LIVEABLE CENTERS INITIATIVE



TURNER FIELD STADIUM NEIGHBORHOODS

LCI PLAN

SEPTEMBER 2016



TIM KEANE, COMMISSIONER
Department of Planning and
Community Development

CHARLETTA WILSON JACKS,
DIRECTOR
Office of Planning

PLAN SPONSORS

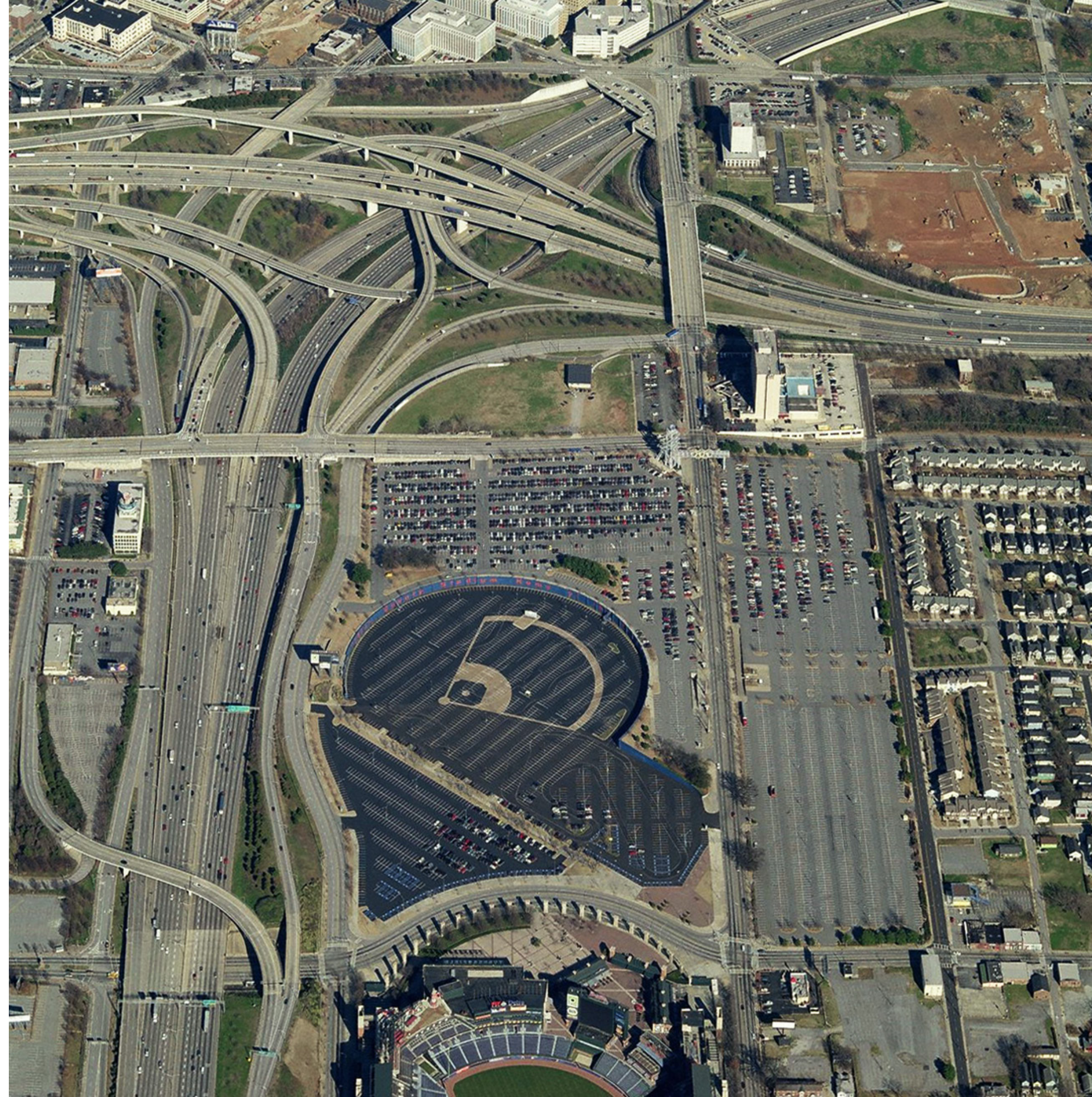


America is at its best when it recognizes the right moment in history to fix what's broken.

Resurfacing roads and strengthening our bridges is critical. But it is equally important to rethink placement, and focus on design to maximize opportunity and interconnectedness.

In that sense, every project is potentially a bridge to real opportunity, and, if designed with care, will create home runs in every neighborhood.

— ANTHONY FOXX, U.S. SECRETARY OF TRANSPORTATION





Birdseye view illustrating the development potential of the core area. Artistic illustration of planning recommendations.

ACKNOWLEDGEMENTS

This historic LCI plan was made possible through the efforts of the following champions:

PLAN SPONSORS

THE CITY OF ATLANTA

The Honorable Mayor Kasim Reed

CITY COUNCIL

Cesar C. Mitchell, Council President

Carla Smith, Council District 1

Kwanza Hall, Council District 2

Ivory Lee Young, Jr., Council District 3

Cleta Winslow, Council District 4

Natalyn Mosby Archibong, Council District 5

Alex Wan, Council District 6

Howard Shook, Council District 7

Yolanda Adrean, Council District 8

Felicia A. Moore, Council District 9

C.T. Martin, Council District 10

Keisha Bottoms, Council District 11

Joyce Sheperd, Council District 12

Michael Julian Bond, Post 1 At Large

Mary Norwood, Post 2 At Large

Andre Dickens, Post 3 At Large

DEPARTMENT OF PLANNING AND COMMUNITY DEVELOPMENT

Tim Keane, Commissioner

OFFICE OF PLANNING

Charletta Wilson Jacks, Director

Jessica Lavandier, Assistant Director, Strategic Planning (LCI's Project Manager)

Jonathan Lewis, Assistant Director, Transportation Planning

Rodney Milton, Principal Planner

Pattie Walden, Public Information Officer

INVEST ATLANTA

Ernestine Garey, Executive VP & COO

Flor Velarde, Planning Specialist

THE ANNIE E. CASEY FOUNDATION

Natallie Keiser, Senior Associate

ATLANTA REGIONAL COMMISSION

Dan Reuter, Manager of Community Development

Amy Goodwin, Principal Planner

Jared Lombard, Senior Principal Planner

THE PROJECT MANAGEMENT TEAM AND THE CORE TEAM

This plan was directed and informed by a Project Management Team and the contributions of a committed Core Team of representatives. They are:

Alvin Dodson, Department of Parks and Recreation

Amy Goodwin, Atlanta Regional Commission

Barbara Washington, City of Atlanta Council District 4

Carla Smith, City of Atlanta Council District 1, Councilmember

Charima C. Young, AARP

Charletta Wilson Jacks, City of Atlanta DPCD Office of Planning, Director

Chris Faulkner, Atlanta Regional Commission

Cleta Winslow, City of Atlanta Council District 4, Councilmember

Columbus Ward, Peoplestown Neighborhood

David Holder, Mechanicsville Neighborhood

David Lively, Grant Park Neighborhood Association

Flor Velarde, Invest Atlanta

Forest Rose, City of Atlanta DPCD Office of Planning-Transportation

Greg Floyd, MARTA

James Collins, Peoplestown Neighborhood Association

Jane Ridley, Turner Field Community Benefits Coalition

Janean Lewis, Atlanta Public Schools

Jennifer Ball Central, Atlanta Progress

Jenny Hoffner, American Rivers

Jeremy Diner, American Rivers

Jessica Lavandier, City of Atlanta DPCD Office of Planning-Strategic Planning, Assistant Director

Jimmy Jones, Fulton County Government

Jocelyn Bivens, City of Atlanta Council District 12

Jonathan Barhite, NPU-W

Jonathan Lewis, Assistant Director, Transportation Planning, City of Atlanta OOP

Joyce Sheperd, City of Atlanta Council District 12, Councilmember

Keisha Lance Bottoms, Atlanta Fulton County Recreation Authority

Keith Hicks, Department of Parks and Recreation

Kelsi Coleman, Annie E Casey Foundation

Kent Spencer, Invest Atlanta

Kerry Hughes, AARP

Ketisha J. Kinnebrew, MBA Atlanta Public Schools

Laura Beall, Peoplestown Neighborhood

Marisa Ghani, Atlanta Regional Commission

Michael T. Sterling, Workforce Development

Moki Macias, Turner Field Community Benefits Coalition

Natalie Keiser, Annie E. Casey Foundation

Patricia Walden, City of Atlanta DPCD

Rick Hudson, Grant Park Neighborhood

Rodney M. Milton, City of Atlanta DPCD Office of Planning-Strategic Planning

Shelley Peart, Department of Public Works

Sheryl Bennett, City of Atlanta Council District 1

Spencer Stoleson, MARTA

Stephanie Flowers, NPU- V

Suzanne Mitchell, Summerhill Neighborhood

Tarnace Watkins, Invest Atlanta

Tim Keane, City of Atlanta DPCD, Commissioner

Todd Hill, Department of Watershed Management



ACKNOWLEDGEMENTS

This historic LCI plan was made possible through the efforts of the following champions:

PLAN SPONSORS

THE CITY OF ATLANTA

The Honorable Mayor Kasim Reed

CITY COUNCIL

Cesar C. Mitchell, Council President

Carla Smith, Council District 1

Kwanza Hall, Council District 2

Ivory Lee Young, Jr., Council District 3

Cleta Winslow, Council District 4

Natalyn Mosby Archibong, Council District 5

Alex Wan, Council District 6

Howard Shook, Council District 7

Yolanda Adrean, Council District 8

Felicia A. Moore, Council District 9

C.T. Martin, Council District 10

Keisha Bottoms, Council District 11

Joyce Sheperd, Council District 12

Michael Julian Bond, Post 1 At Large

Mary Norwood, Post 2 At Large

Andre Dickens, Post 3 At Large

DEPARTMENT OF PLANNING AND COMMUNITY DEVELOPMENT

Tim Keane, Commissioner

OFFICE OF PLANNING

Charletta Wilson Jacks, Director

Jessica Lavandier, Assistant Director, Strategic Planning (LCI's Project Manager)

Jonathan Lewis, Assistant Director, Transportation Planning

Rodney Milton, Principal Planner

Pattie Walden, Public Information Officer

INVEST ATLANTA

Ernestine Garey, Executive VP & COO

Flor Velarde, Planning Specialist

THE ANNIE E. CASEY FOUNDATION

Natallie Keiser, Senior Associate

ATLANTA REGIONAL COMMISSION

Dan Reuter, Manager of Community Development

Amy Goodwin, Principal Planner

Jared Lombard, Senior Principal Planner

THE PROJECT MANAGEMENT TEAM AND THE CORE TEAM

This plan was directed and informed by a Project Management Team and the contributions of a committed Core Team of representatives. They are:

Alvin Dodson, Department of Parks and Recreation

Amy Goodwin, Atlanta Regional Commission

Barbara Washington, City of Atlanta Council District 4

Carla Smith, City of Atlanta Council District 1, Councilmember

Charima C. Young, AARP

Charletta Wilson Jacks, City of Atlanta DPCD Office of Planning, Director

Chris Faulkner, Atlanta Regional Commission

Cleta Winslow, City of Atlanta Council District 4, Councilmember

Columbus Ward, Peoplestown Neighborhood

David Holder, Mechanicsville Neighborhood

David Lively, Grant Park Neighborhood Association

Flor Velarde, Invest Atlanta

Forest Rose, City of Atlanta DPCD Office of Planning-Transportation

Greg Floyd, MARTA

James Collins, Peoplestown Neighborhood Association

Jane Ridley, Turner Field Community Benefits Coalition

Janean Lewis, Atlanta Public Schools

Jennifer Ball Central, Atlanta Progress

Jenny Hoffner, American Rivers

Jeremy Diner, American Rivers

Jessica Lavandier, City of Atlanta DPCD Office of Planning-Strategic Planning, Assistant Director

Jimmy Jones, Fulton County Government

Jocelyn Bivens, City of Atlanta Council District 12

Jonathan Barhite, NPU-W

Jonathan Lewis, Assistant Director, Transportation Planning, City of Atlanta OOP

Joyce Sheperd, City of Atlanta Council District 12, Councilmember

Keisha Lance Bottoms, Atlanta Fulton County Recreation Authority

Keith Hicks, Department of Parks and Recreation

Kelsi Coleman, Annie E Casey Foundation

Kent Spencer, Invest Atlanta

Kerry Hughes, AARP

Ketisha J. Kinnebrew, MBA Atlanta Public Schools

Laura Beall, Peoplestown Neighborhood

Marisa Ghani, Atlanta Regional Commission

Michael T. Sterling, Workforce Development

Moki Macias, Turner Field Community Benefits Coalition

Natalie Keiser, Annie E. Casey Foundation

Patricia Walden, City of Atlanta DPCD

Rick Hudson, Grant Park Neighborhood

Rodney M. Milton, City of Atlanta DPCD Office of Planning-Strategic Planning

Shelley Peart, Department of Public Works

Sherly Bennett, City of Atlanta Council District 1

Spencer Stoleson, MARTA

Stephanie Flowers, NPU- V

Suzanne Mitchell, Summerhill Neighborhood

Tarnace Watkins, Invest Atlanta

Tim Keane, City of Atlanta DPCD, Commissioner

Todd Hill, Department of Watershed Management



02 RESTORING THE CORE

Defining Success

- Site's DNA
- Market Reality
- Community's Vision

Designing the Vision

- Finding Consensus
- Design Parameters
- Design Concepts

Establishing a New Framework

- Enhanced Mobility
- Green Infrastructure
- Additional Development

04 ONE LCI COMMUNITY

Enhanced Mobility

- Green Infrastructure and Open Space
- New Development
- Commercial Opportunities
- Housing Opportunities

06 APPENDIX

The LCI Story



01 AN HISTORIC OPPORTUNITY

- Not Your Typical LCI
- An Historic Opportunity
- The LCI Process

03 FIVE STADIUM NEIGHBORHOODS

- Redefining Success
- Revisiting the Neighborhood Plans
- Neighborhood Identity
- Issues, Assets and Opportunities

05 ACTION PLAN

- Implementation Matrix
- 100-Day Action Plan
- Future Land Use / Development Districts